

*Propeller  
Design  
Software  
Since 1984*

#### WHAT IS PROPCAD?

*PropCad* is software for the geometric modeling of marine propellers. It provides all of the tools for the preparation of 2D design drawings, 3D views, construction data, and CAD/CAM file export.

#### WHO SHOULD USE PROPCAD?

Manufacturers, researchers and designers of marine propellers are the principal users of *PropCad*. Companies large and small from every continent rely on *PropCad* for their propeller modeling needs.

#### WHAT PROPELLERS CAN I DRAW WITH PROPCAD?

Designs of virtually any type of marine propeller can be prepared with *PropCad's* comprehensive geometry definition. (*PropCad* will even help prepare drawings for other rotating machinery elements, such as turbine blades and aviation propellers). The easiest way to create a propeller drawing is with *PropCad's* design wizard – the Builder.

#### HOW DOES PROPCAD BUILDER WORK?

Libraries of popular propeller styles (e.g., Gawn, B-series, Kaplan, AU, SK) are included in *PropCad*. Complete propeller geometry can be built by describing a few important objective values. Enter a target blade area ratio, the amount of skew or rake, and thickness rule, for example, and *PropCad* builds all of the propeller's geometry – chord length, thickness, skew, rake, and all section offsets.

#### WILL PROPCAD WORK WITH OTHER PROPELLER TYPES?

*PropCad* geometry data may be completely edited by the user to represent practically any propeller. The Builder can also simplify the creation of a new model from an existing drawing. *PropCad* files can then be saved as starting “templates” for variants of the basic design.

#### WHAT INFORMATION IS SHOWN ON A PROPCAD DRAWING?

*PropCad* output includes traditional 2D design drawings, 3D views, and printed tables of 2D and 3D section offsets. The drawing may be viewed, edited, and printed to any printer or plotter. The design drawing includes expanded, transverse and profile views, pitch distribution, geometric information (e.g., weight and inertia), as well as the basic propeller parameters. (See the graphic on the back.)

#### CAN I EXPORT A PROPCAD DESIGN FOR MANUFACTURE?

Both 2D and 3D propeller geometry may be exported from *PropCad*. This information is in a variety of formats, and is used for many purposes, such as further CAD development of the hub, rapid prototyping, NC milling, or for CFD and FEA analysis. *PropCad* exports to many popular CAD/CAM software, including CorelCAD, Rhino, SolidWorks, SurfCAM, and Mastercam.

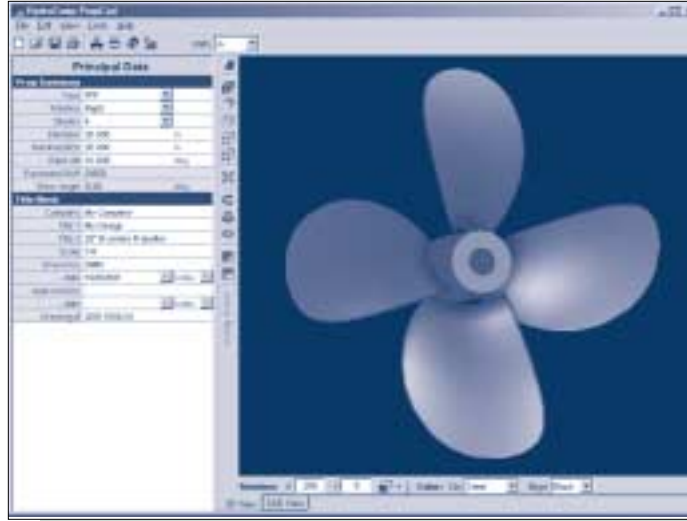
#### WILL PROPCAD HELP ME WITH MY EXISTING DESIGNS?

The organization of *PropCad* is based on contemporary propeller design practices, so re-creating your designs in *PropCad* is an easy process. You can also look to *PropCad's* optional Scan Converter utility for those times when you do not have existing design data. Scan Converter lets you take blade scans (as found with a propeller scanning device) and develop a *PropCad* design file.

RAPID DEVELOPMENT WITH DESIGN WIZARDS
SUPPORTS ANY CUSTOM GEOMETRY
CLASSIFICATION THICKNESS CALCULATIONS
WEIGHT AND INERTIA PROPERTIES
CONVERT SCANNED BLADE DATA INTO A DESIGN



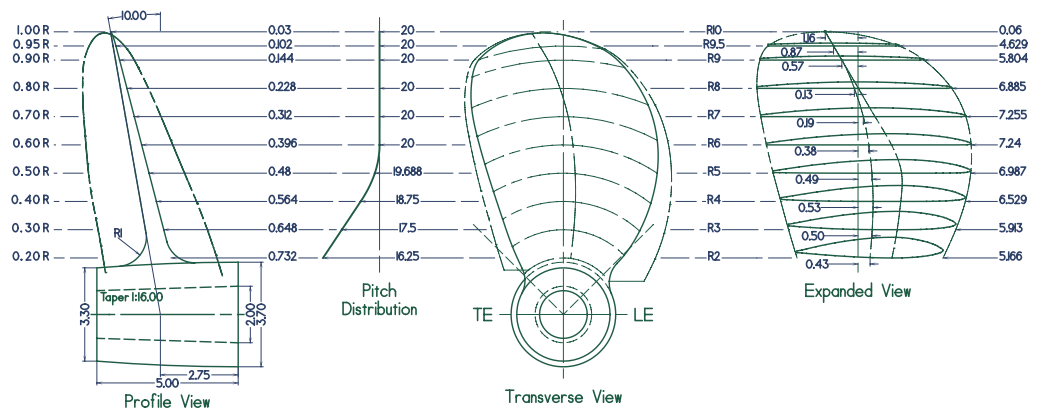
**PROPCAD – FROM CONCEPT TO 3D MODEL**



SAMPLE PROPCAD SCREEN  
WITH 3D VIEW

- 2D drawings
- 2D/3D design environment
- Integrated design library
- Rapid design development
- Export to CAD/CAM

BUILDER PARAMETERS	Section shape • Pitch distribution • Expanded area ratio Blade outline • Rake & skew angles • Edge & blade thickness Hub parameters • Shaft diameter & taper • Cup depth & extents
BUILDER LIBRARY PROPELLERS	AU (MAU) • B-series • Gawn • Kaplan • SK • Modified Gawn Additionally for outline: BB-series, AU CPP
THICKNESS RULES	ABS • BV/RINA - GL - KR
FILE EXPORTS	Drawing: DWG, DXF, GCD, VCD, WMF 3D data: VRML, IMSA IDF "Prop" entity, PropCad offset 3D & mesh files CAD/CAM: CorelCAD, Mastercam, Rhino, SolidWorks, SurfCAM
CALCULATIONS	Total weight • Mass inertia • Added wetted inertia



To order, please contact HydroComp, Inc. or an authorized representative:

FOR LICENSE AND  
ORDERING INFORMATION,  
PLEASE CONTACT:

HYDROCOMP, INC.

13 JENKINS COURT

SUITE 200

DURHAM, NH 03824 USA

TEL [603] 868-3344

FAX [603] 868-3366

E-MAIL

INFO@HYDROCOMPINC.COM